
COMUNE DI VIZZINI
 (Città Metropolitana di Catania)

LAVORI DI RIPRISTINO DELLE CONDIZIONI DI AGIBILITA' DELL'EX
 CENTRO DIURNO PER ANZIANI SITO IN PIAZZA S. MARIA DI GESU'

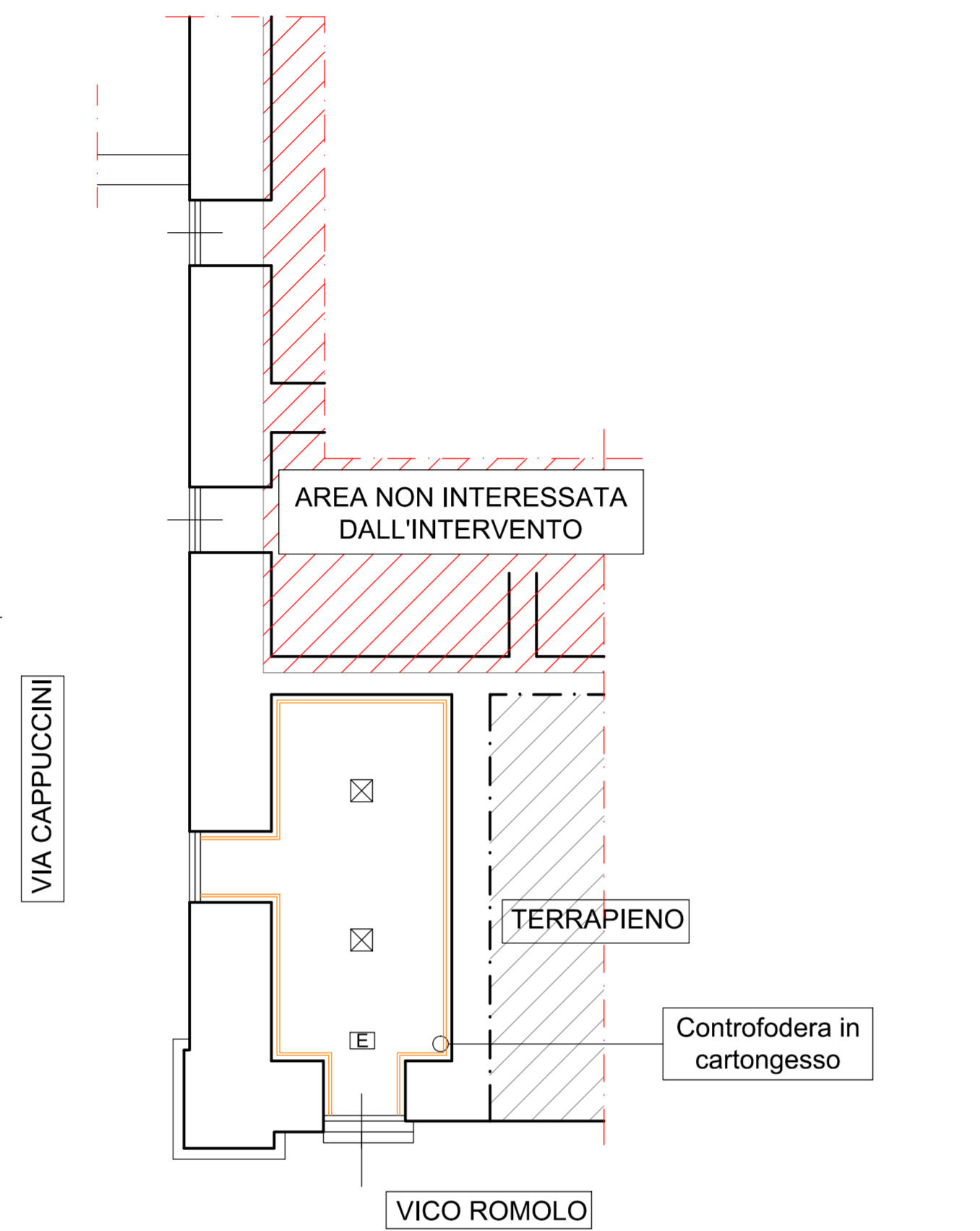
PROGETTO ESECUTIVO

TAVOLA: **P4** SCALA 1:100 PROGETTISTA U.T. COMUNALE:
 (Arch. Salvatore Lentini)

DATA: _____




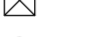



ALLEGATO:
 - STATO DI PROGETTO
 - IMPIANTO CONDIZIONAMENTO CON POMPE DI CALORE
 - IMPIANTO ILLUMINAZIONE

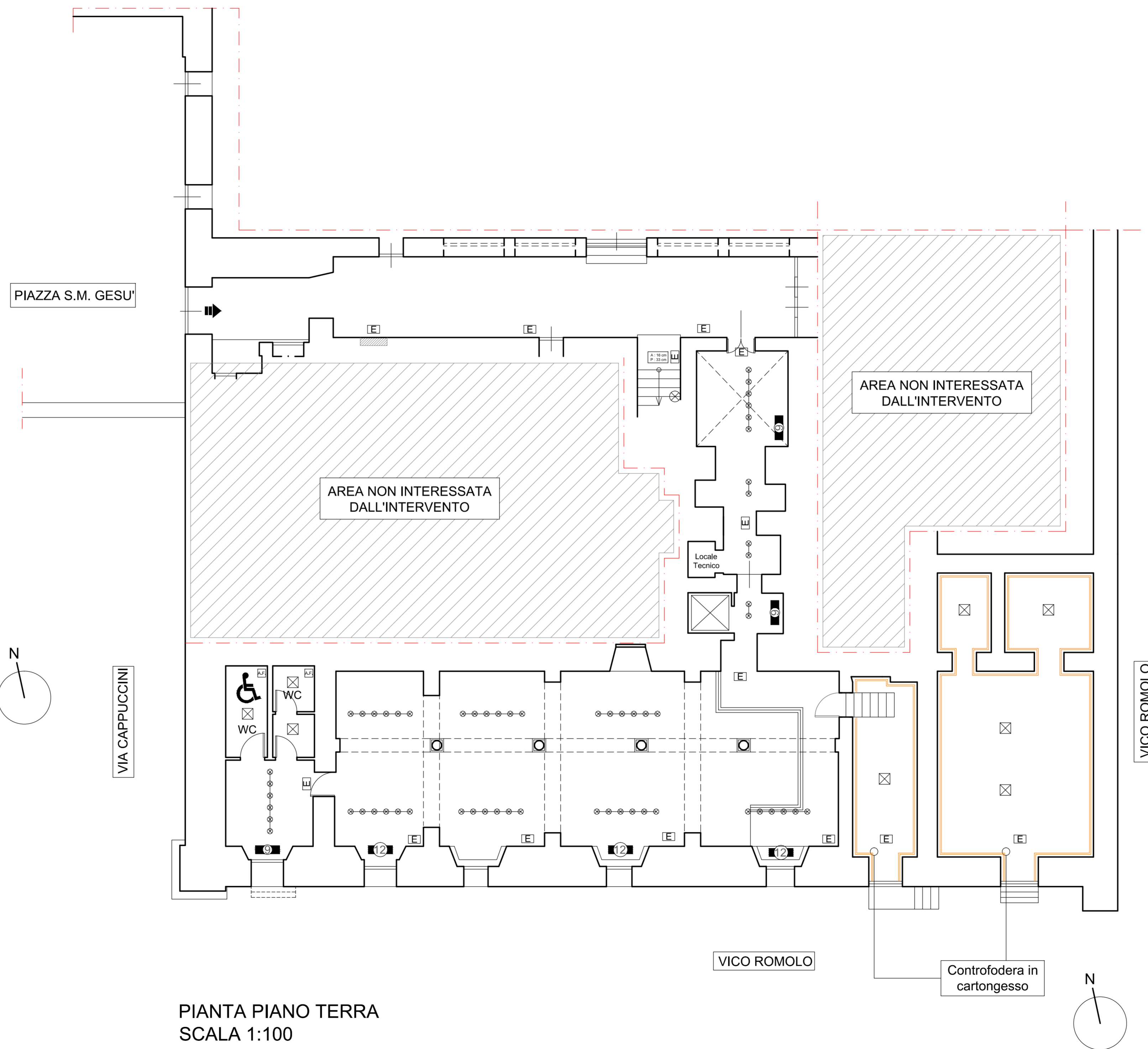
VISTI DI APPROVAZIONE



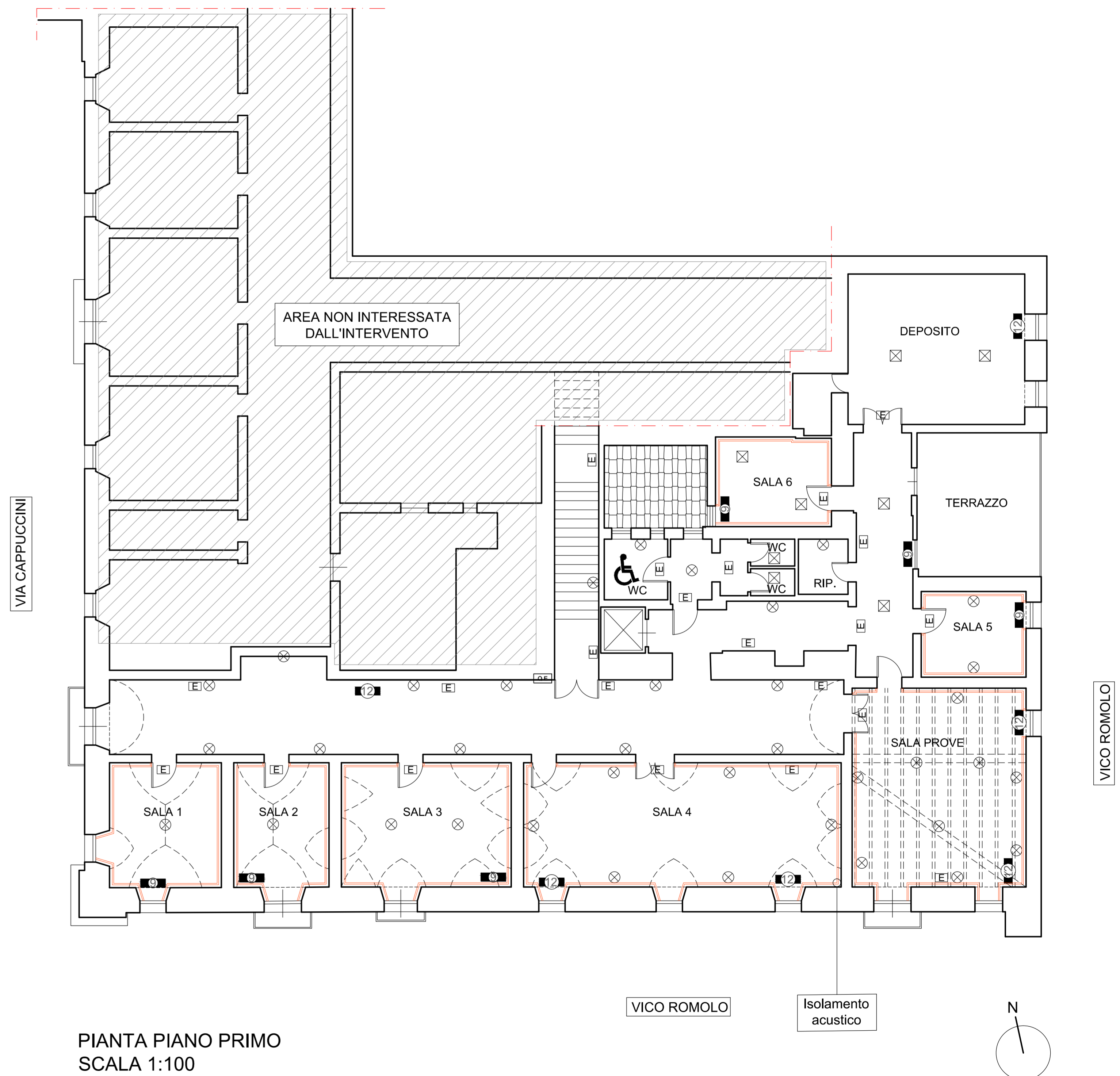
PIANTA PIANO SEMINTERRATO
SCALA 1:100

LEGENDA

	POMPE DI CALORE 2,3 Kw
	POMPE DI CALORE 2,7 Kw
	LUCI DI EMERGENZA
	CORPO ILLUMINANTE A LED DA INCASSO
	CORPO ILLUMINANTE A LED A SOSPENSIONE/A PARETE
	FARETTI SU BINARI ELETTRIFICATI
	AEREAZIONE FORZATA



PIANTA PIANO TERRA
SCALA 1:100



PIANTA PIANO PRIMO
SCALA 1:100